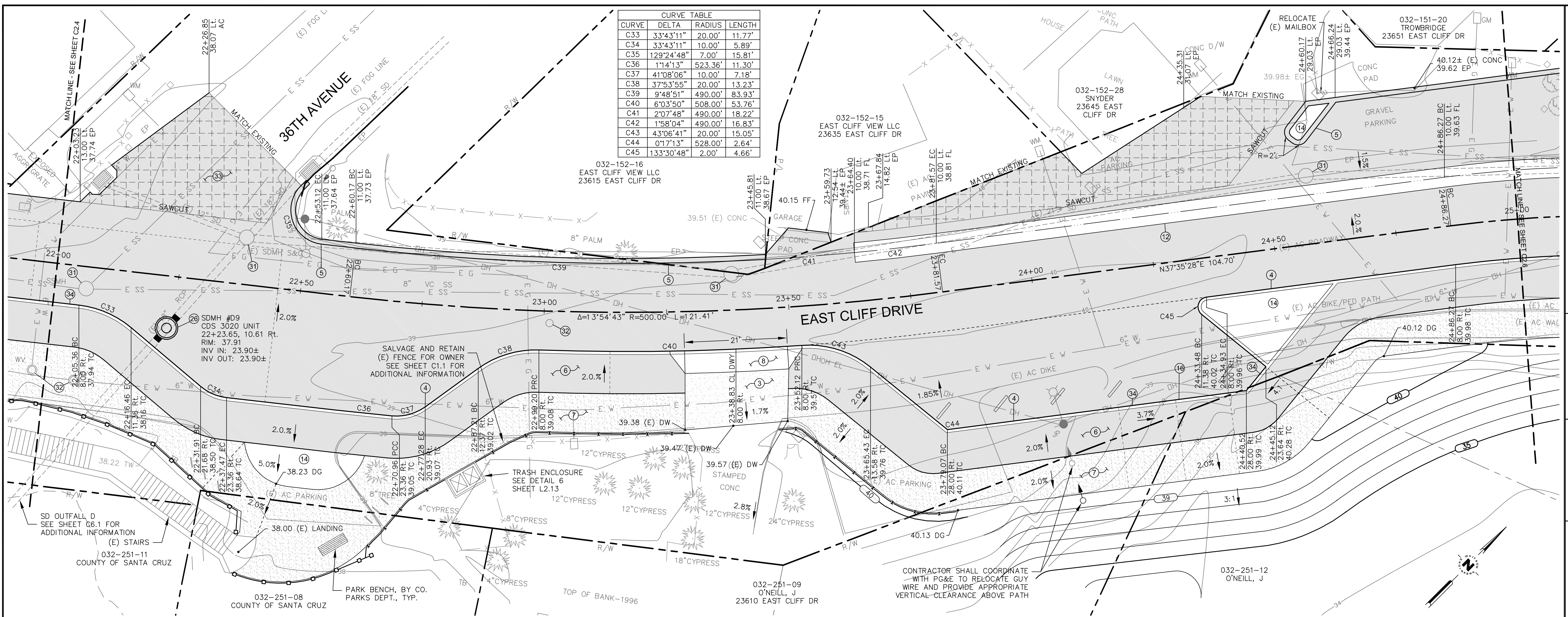
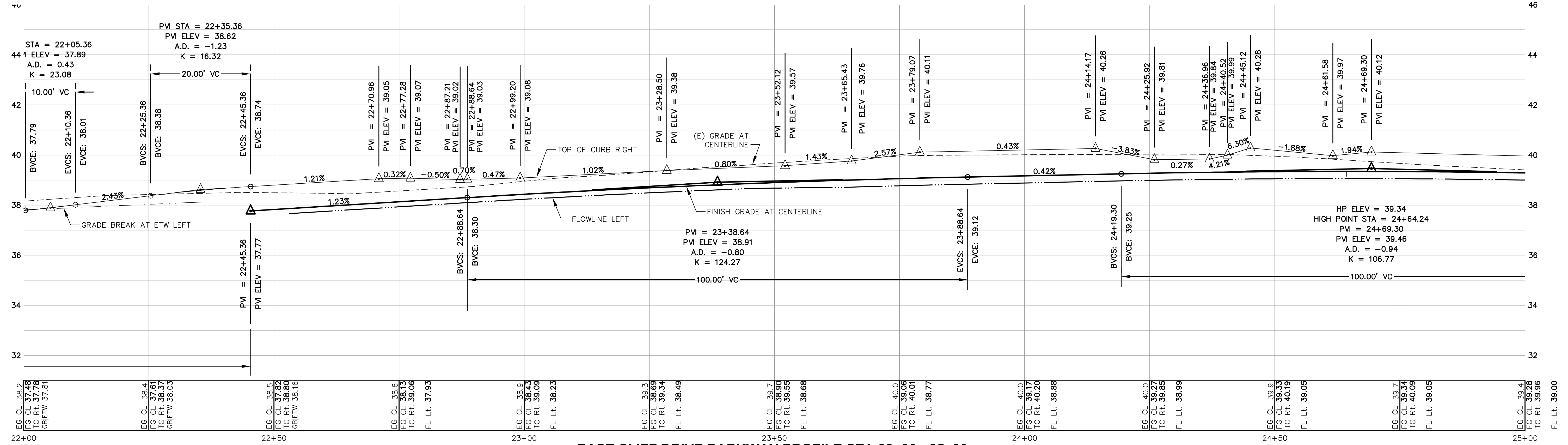


CURVE	DELTA	RADIUS	LENGTH
C33	33°43'11"	20.00'	11.77'
C34	33°43'11"	10.00'	5.89'
C35	129°24'48"	7.00'	15.81'
C36	1°14'13"	523.36'	11.30'
C37	41°08'06"	10.00'	7.18'
C38	37°53'55"	20.00'	13.23'
C39	9°48'51"	490.00'	83.93'
C40	6°03'50"	508.00'	53.76'
C41	2°07'48"	490.00'	18.22'
C42	1°58'04"	490.00'	16.83'
C43	43°06'41"	20.00'	15.05'
C44	0°17'13"	528.00'	2.64'
C45	133°30'48"	2.00'	4.66'



EAST CLIFF DRIVE PARKWAY PLAN STA 22+00 - 25+00
SCALE: 1" = 10'



EAST CLIFF DRIVE PARKWAY PROFILE STA 22+00 - 25+00
SCALE: 1" = 10' HORIZONTAL, 1" = 2' VERTICAL

WHITSON ENGINEERS
2425 Porter Street - Suite 2 - Soquel, CA 95073
831 464-9363 • Fax 831 464-2316
CIVIL ENGINEERING • LAND SURVEYING • PROJECT MANAGEMENT



County of Santa Cruz
Department of Public Works
701 Ocean St., Rm 410
Santa Cruz, CA 95060-4000
Phone: (831) 452-2180
Fax: (831) 454-2265

GRADING AND DRAINAGE
PLAN AND PROFILE
STA 22+00 - STA 25+00
EAST CLIFF DRIVE PARKWAY PROJECT
32nd AVENUE TO 41ST AVENUE
County of Santa Cruz

REV	DATE	DESCRIPTION
1	03/22/10	75% SUBMITTAL
2	10/08/10	95% SUBMITTAL
3	07/12/11	BID SET

DATE: SEPTEMBER 2010
SCALE: AS NOTED
DESIGNED BY: MS/RT
DRAFTED BY: RT/SG
CHECKED BY: KW
JOB NO.: 2280.01
FILE: Civil Plan.dwg

C2.5